



GMT MONTHLY MEMBERSHIP PROGRESS REPORT

Results as of: 2/29/2020

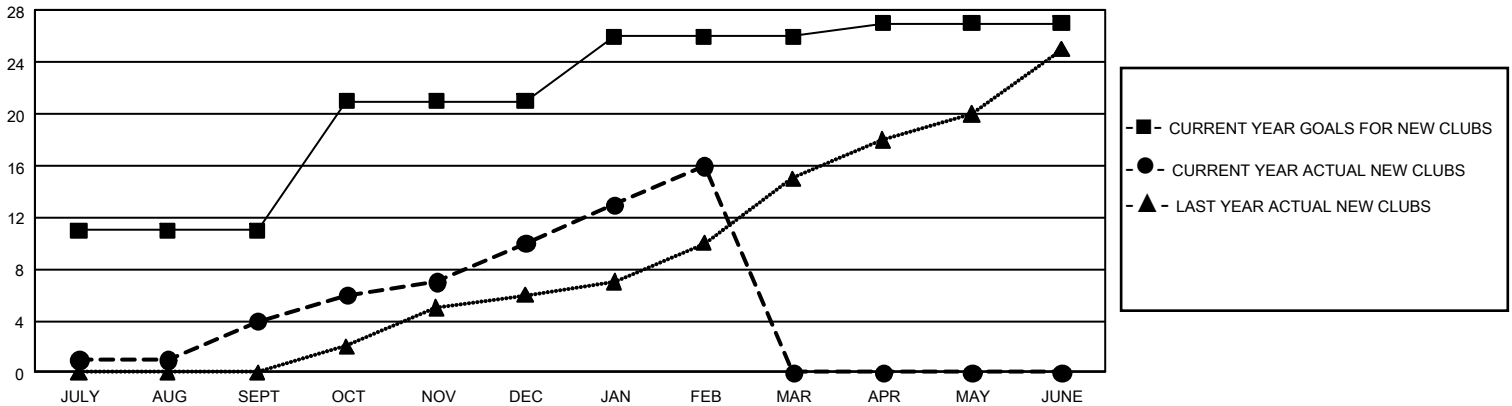
GMT Constitutional Area 6, Group B

GMT: OPEN

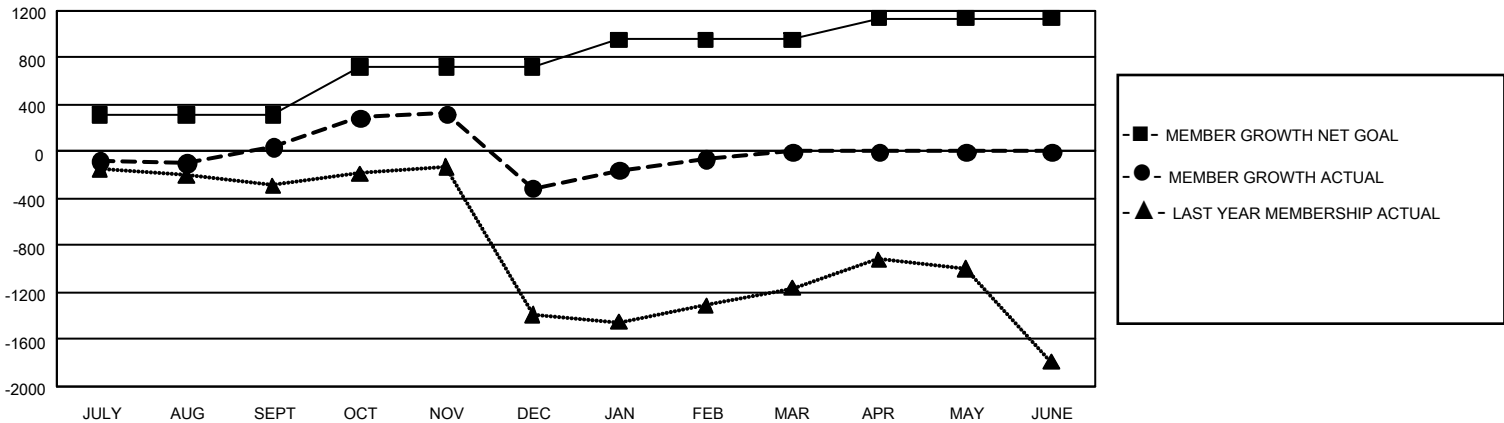
REPORT DOES NOT INCLUDE CLUBS IN UNDISTRICTED AREAS.

Clubs				Members			
RESULTS FOR 2019-2020				RESULTS FOR 2019-2020			
QUARTER	NEW CLUB GOAL	NEW CLUBS	DROPPED CLUBS	QUARTER	MEMBER GROWTH NET GOAL	MEMBER GROWTH ACTUAL	DROPPED MEMBERS ACTUAL (including transfers)
JULY/AUG/SEPT	33	4	6	JULY/AUG/SEPT	930	515	408
OCT/NOV/DEC	30	6	24	OCT/NOV/DEC	1,245	713	1,039
JAN/FEB/MAR	15	6	2	JAN/FEB/MAR	690	428	126
APR/MAY/JUNE	3	0	0	APR/MAY/JUNE	543	0	0

GOALS AND ACTUAL NEW CLUBS CUMULATIVE



GOALS AND ACTUAL MEMBERS CUMULATIVE



DROPPED CLUBS: 32	297 CLUBS OF 571 ADDED 1 OR MORE NEW MEMBERS	<u>GENDER DISTRIBUTION</u> MALE 11,042 (76.18%) FEMALE 3,452 (23.82%)
<u>DROPPED MEMBERS</u> DECEASED 42 CLUB CANCELLED 434 OTHER 1,096 <hr/> TOTAL 1,572	CLICK HERE FOR CUMULATIVE MEMBERSHIP DATA	TOTAL FAMILY UNIT MEMBERS 4,858 FAMILY MEMBERS PAYING HALF DUES 2,640